



Dear Friends:

Thank you for your interest in the HAROLD WARP PIONEER VILLAGE. The Pioneer Village has been **"Showing Man's Progress"** for over half a century. Special events, activities and displays are highlighted within the complex, which is composed of 26 buildings on the "Village" grounds. More than 50,000 historic items are currently on display in chronological order from 1830 to today. With so much to see, you and your family may wish to return the following day. While you stay with us in our convenient adjoining Motel or Campground, take advantage of our free overnight pass offer allowing you to return to the Museum as many consecutive days as you like on one admission. The Pioneer Restaurant and Lounge, next to the Motel, offers a varied menu, takeout and catering.

Pioneer Village is open every day of the year including Sundays and all holidays except Christmas Day. Regular admission prices are: \$10.95 for adults, \$6.00 for children between the ages of 6 and 12, under 6 free. Special rates are available for groups of 10 or more. Prices do not include tax and may be subject to change.

The Pioneer Village Motel, R.V. Park and Campgrounds are located in the Pioneer Village complex. They offer affordable overnight accommodations. A special overnight discount package is available if you choose to stay with us. Please call for details. You may contact the Pioneer Village Motel /RV Park directly for current rates and availability at 308-832-2750 or 800-445-4447.

I would like to extend an invitation to you to visit the **HAROLD WARP PIONEER VILLAGE** and **"See How America Grew."** A brochure is enclosed for your convenience. Take a few minutes and look over all we have to offer. Please call 800-445-4447 or visit [www.pioneervillage.org](http://www.pioneervillage.org) for additional information.

Sincerely,

Marshall S. Nelson  
General Manager of Operations  
**Harold Warp Pioneer Village Foundation**



HAROLD WARP  
**PIONEER VILLAGE**  
 MINDEN, NEBR.



*Authentic Americana*

*Nebraska's #1 Tourist Attraction*  
**Visited By**

five million people from every state in the nation and many foreign countries. The display items are so well arranged in chronological order of development that they can all be seen by walking less than a mile. Yet, some folks spend days here on one admission fee, as each item is historically described.

**Honored By**

**American Antique Auto Assn.:** for preserving the history of the automobile. Here is the largest collection of historically arranged antique cars in America.

**Cowboy Hall of Fame:** for preserving all the things that built our nation.

**Horatio Alger Award:** The most prestigious award in the nation was presented to Harold Warp in 1979 paritally for having put together the Pioneer Village at Minden, Nebraska.

Dozens of other awards have been received. Pioneer Village is one of the nation's best planned and most comprehensive collections of Americana, covering the period from 1830 to the present. It was founded by Harold Warp in 1953, who was born in 1903 on a Nebraska homestead and in 1924 went to Chicago to manufacture Warp's Plastics products. The construction of the Pioneer Village was actually "triggered" by the sale in 1948 of the country school Mr. Warp had attended as a child. The Village, Warp Bros. and Nebraska farms are now run by his son, Harold G. Warp.

**Nebraska's #1 Attraction**

HAROLD WARP  
**PIONEER VILLAGE**  
 MINDEN, NEBR.

*Authentic Americana*



*Showing Man's  
 Progress Since 1830*

"For Thousands of years man lived quite simply. Then like a sleeping giant, our world was awakened. In a mere hundred and twenty years of eternal time, man progressed from open hearths, grease lamps and ox carts to television, super-sonic speed and atomic power. We have endeavored to show you the actual development of this astounding progress as it was unfolded by our forefathers and by ourselves . . ."

H. Warp

**HAROLD WARP PIONEER VILLAGE**

138 E. Highway 6, Minden, Nebr. 68959  
 (800) 445-4447 Motel: (308) 832-2750  
 (308) 832-1181 Restaurant: (308) 832-1550

**A NON-PROFIT FOUNDATION**

www.pioneervillage.org Established 1953



"Pioneer Village" is a Registered Trademark of the Harold Warp Pioneer Village Foundation.

06-09-150M MC Subject to change without notice.

HAROLD WARP  
**PIONEER VILLAGE**

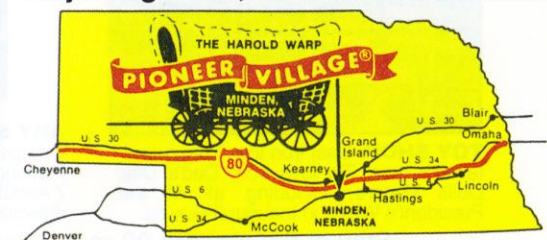
Minden, Nebraska 68959



**THE STORY OF AMERICA  
 AND HOW IT GREW**

More than 50,000 Items from Every Field of Human Endeavor • 28 Buildings on 20 Acres • Authentic Originals arranged in their order of Development • All Mechanical Items in Operating Condition. Some run with the push of a Button.

**Open 7 Days a Week,  
 All Year Round**  
**Adjoining Motel, RV Park & Restaurant**



**12 Miles South of I-80 at Exit 279.**  
 Take Harold Warp Memorial Drive (Nebr. Hwy 10) to Minden. Entrance on US 6, US 34 & NE 10.

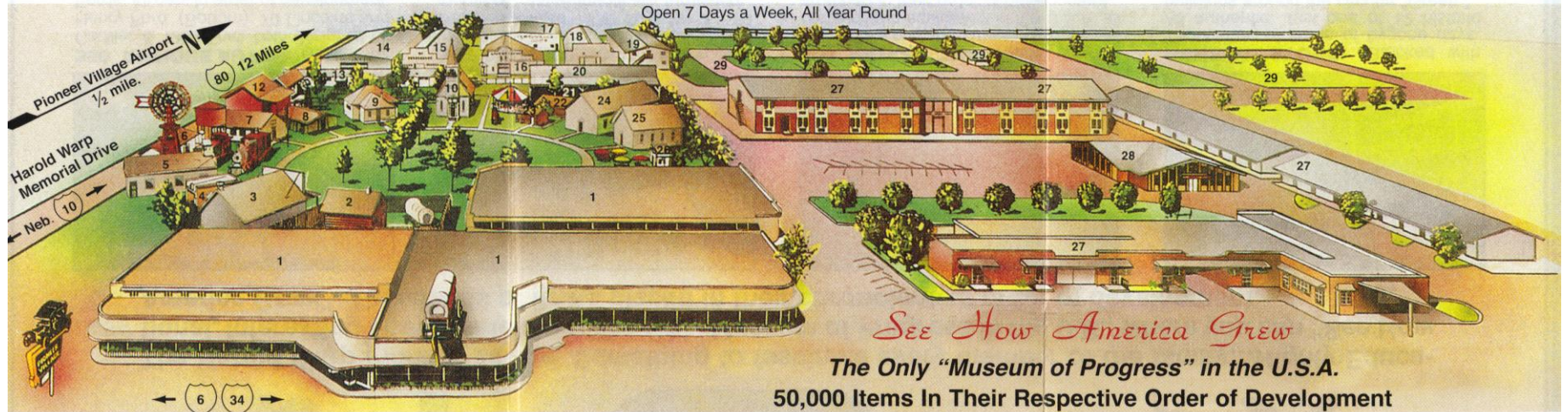


# Nebraska's #1 Attraction

HAROLD WARP  
**PIONEER VILLAGE**  
MINDEN, NEBR.

*Authentic Americana*

Open 7 Days a Week, All Year Round



*See How America Grew*

The Only "Museum of Progress" in the U.S.A.

50,000 Items In Their Respective Order of Development

**CLOCKWISE AROUND THE VILLAGE GREEN...**

- 1 MAIN BUILDING:** More than 10,000 items in this building, showing the development of transportation, lighting, guns, money, many other facets of life—arranged in chronological order. Including the oldest internal combustion engine (1876 Otto) and oldest jet airplane (1942-P59). One section is devoted to art and sculpture.
- 2 ELM CREEK FORT:** The first log cabin in Webster County Nebraska, both as a dwelling and as a community fort against Indian attack, built in 1869. The interior is authentically furnished. An original Pony Express mailbox is on the wall.
- 3 THE PEOPLE'S STORE:** Replica of a general merchandise store that served the Stamford, Nebraska area in pioneer days, completely stocked with by-gone items. Includes original Fort Kearney Post Office mailboxes and a glass cat on the cracker barrel.
- 4 BLOOMINGTON LAND OFFICE:** Moved from its original location in Franklin County, Nebraska, this building actually served pioneers filing their homestead claims. It contains early maps, old land records and John N. Warp's original homestead title.
- 5 FIRE HOUSE:** The development of fire-fighting equipment from hand cart to modern fire trucks are here. Also an outdoor jail made of strap iron and an early diesel powered city light plant.
- 6 LOWELL DEPOT:** From 1872 to 1882, during homesteading days, this was the western terminus of the B & M Railroad. Two early-day locomotives and a narrow gauge caboose are displayed in front of the depot. During restoration seven worn out floors were discovered, each on top of the other, in the depot.

- 7 COUNTRY SCHOOL:** An authentic rural school building of the late 19th and early 20th century, furnished with original desks, books, stove, water pail, dinner pails, outhouses, etc. Even Harold Warp's Perfect Attendance Certificates.
- 8 SOD HOUSE:** Authentic replica of the "little old soddy on the plains," completely furnished. Including trundle bed and "skatol."
- 9 CHINA HOUSE:** Houses fascinating collections of china, pottery, cut glass and precious keepsakes carried west in covered wagons, including a sugar bowl owned by Abraham Lincoln with glazed pictures of his mother and grandmother.
- 10 CHURCH:** Built in 1884 the first church in Minden, has the original pews, pulpit, organ, etc. (Thirty minute non-denominational Sunday Services still held during summer months.)
- 11 MERRY-GO-ROUND:** Oldest in the U.S., steam powered. Rides are still 5c. The engineer may even let you blow the whistle.
- 12 HORSE BARN:** Typical pioneer barn, moved from Warp homestead 9 miles south of Minden. (Harold Warp's parents were good Christians, so the hayloft boards were laid rough side up, so young folks couldn't have barn dances.)
- 13 HOMES AND SHOPS BUILDING:** Twenty rooms of the past, showing kitchens, living rooms and bedrooms of each generation since 1830. Also music shop, doctor's office, print shop, drug store, barber shop, many others. Yarn spinning, weaving, and broom making demonstrated daily. Photo gallery takes pictures in antique costumes. Second floor has surprisingly low mail order prices on furniture at turn of century. Also Carl Curtis' Senate Office 1954 to 1978.

- 14 ANTIQUE FARM MACHINERY BUILDING:** 265 feet long, houses complete evolution of plowing, cultivating, seeding, harvesting and threshing equipment. (Including a huge combine of 1890, pulled by 30 horses.)
- 15 ANTIQUE TRACTOR AND TRUCK BUILDING:** 100 early farm tractors. Also, farm trucks, lawn mowers and gasoline engines. (Including a hot air engine and Dave Buick's first gasoline engine.)
- 16 LIVERY STABLE:** Originally built in Minden during the "horse and buggy days," this huge two-story building houses saddles, harness, fly nets and horse drawn rigs galore. (Including a complete harness shop and set of huge logging wheels.)
- 17 ANTIQUE CARS:** This bldg., 22,400 sq ft., two stories, featuring antique Buicks, Cadillacs, Dodges, Chryslers, Oldsmobiles, etc., 100 cars in their order of development. Also an early house trailer and motor home.
- 18 CHEVROLETS AND OTHER CARS:** Antique auto bldg., two stories, 265 feet long. Featuring over 50 Chevrolets on first floor, including first Corvette and extinct cars on 2nd floor.
- 19 FORDS, STUDEBAKERS, MOTORCYCLES, SNOWMOBILES AND BICYCLES:** Two stories, 265 feet long, housing over 50 Fords, Lincolns, Mercurys and Edsels on first floor. On second floor is the finest collection of antique motorcycles, bicycles, snowmobiles anywhere.
- 20 AGRICULTURAL BUILDING AND STEAM TRACTORS:** This two-story building houses over 500 agricultural implements, in order of development, that helped build our vast agricultural economy. (Including McCormick's first reaper, John Deere's first plow, and a "see-thru" bee-hive.)

- 21 BLACKSMITH SHOP:** Blacksmith forges items for sale during summer months. (See Eli Whitney's turning lathe and an early line shaft on display.)
- 22 PONY EXPRESS BARN:** Authentically reconstructed, with model horses and historic saddles. (Includes 20-mule team Borax wagon and items dug up at Fort Kearney.)
- 23 PONY EXPRESS STATION:** Authentic log building, moved to Pioneer Village from Bridgeport, Nebraska, where it originally served as Pumpkinseed relay station to the Black Hills. (See Buffalo Bill's saddle in a glass case.)
- 24 HOME APPLIANCE BUILDING:** To make mother's workday easier - it houses evolution of washing machines, stoves, refrigerators, bathtubs, etc. (Including first "Franklin" stove 1744, and first "Kelvinator" refrigerator 1925.)
- 25 HOBBY HOUSE:** Absorbing collection of dolls, pitchers, buttons, hatpins, fans, canes, trivets, many other items.
- 26 SNACK BAR:** Serving coffee, ice cream, candy, soft drinks and sandwiches.
- 27 PIONEER VILLAGE MOTEL:** 90 modern units at reasonable rates.
- 28 PIONEER VILLAGE RESTAURANT:** Serving fine foods for fastidious folks at popular prices. Seats 350. (Banquet rooms available.)
- 29 PIONEER VILLAGE CAMP GROUNDS:** Showers and facilities, reasonable. Some full service hookups. Accommodates over 135 campers.
- 30 AIRPORT:** 1/2 mile north, 3,900 ft. paved runway. Courtesy Transportation from Pioneer Village Field.

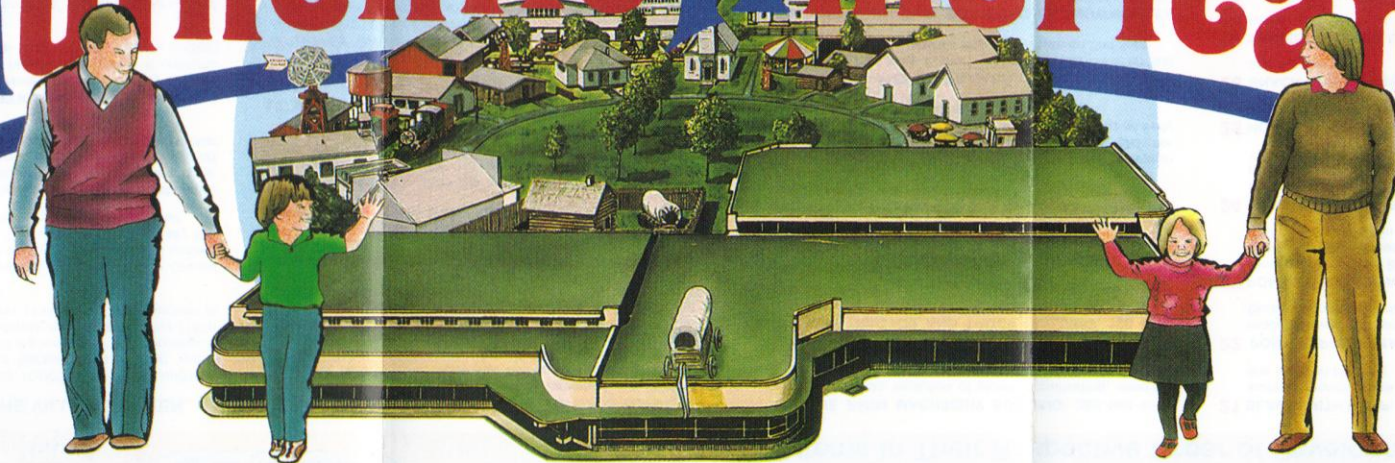
**PLAN A FAMILY FUN VACATION!**  
Stay With Us And Your 2nd Day Admission Is Free

— There's Nothing Like It Anywhere —

**SPECIAL RATES FOR TOUR GROUPS!**  
So Well Arranged You Can See It All By Walking Less Than A Mile



# Authentic Americana



The Harold Warp Pioneer Village. Something to fascinate every member of the family...Highly Educational, Interesting and Entertaining. The Only Museum of Progress in the U.S., where you can "See How America Grew". Thousands of items placed in their chronological order of development.



**350 ANTIQUE AUTOS:** (Top) 1902 Cadillac & 1903 Ford, both designed by Henry Ford. (Bottom): 70 Lincolns and Fords. All cars in order of development.



**SEE 7 GENERATIONS OF ROOMS:** Including Kitchens, Living Rooms and Bedrooms from 1830 to present. 20 rooms of Past authentically furnished.



**100 ANTIQUE TRACTORS,** 30 Antique trucks and the largest collection of horse-drawn equipment in the U.S.A. all arranged in their order of development.



**GENERAL STORE:** Stocked with Thousands of Items of bygone days. All authentic. Just one of 12 historic buildings around the circular "Green."



**STEAM POWERED CAROUSEL:** Oldest in existence. Rides still 5¢ for kids of all ages. The Engineer might even let you blow the whistle!



**CRAFTS FROM THE PAST:** (L) Spinning, (Center) Glass Blowing, (R) Broom Making. Many other crafts including Rug Weaving, Blacksmith, etc.



**20 HISTORIC FLYING MACHINES:** Including oldest Jet, Helicopter & Autogiro. Also early aviation engines. A unique collection of early aviation.



**SEE COMPLETE EVOLUTION OF MUSIC:** From Harp to television, including the earliest music machines, phonographs & crystal radios, (etc.)

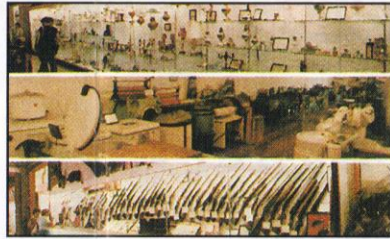




**(L) ELM CREEK STOCKADE:** First Cabin in Webster County, Nebr., 1869.  
**(R) PONY EXPRESS:** Relay Station to the Black Hills, 1860, with 3 horse barn.



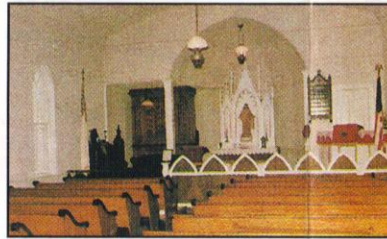
**Bicycles, Motorcycles:** From first foot powered bikes to modern day Motorcycles, dozens of them. Horse Car & Street Car Development.



**(TOP) LIGHTING EVOLUTION:** Grease Lamp to Fluorescent. (Center) **WASHING MACHINES, Sewing Machines, Stoves, etc.** (Bottom) **GUNS,** telephones, even ice Skates and Skis.



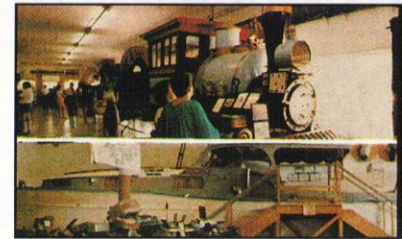
**Antique Farm Machinery:** largest collection in the U.S.A. From hand-powered to ox-powered, horsepowered and self-propelled.



**COUNTRY CHURCH:** Over 100 years old, Beautifully restored. Church services conducted every Sunday, 11:30 AM, June through September.



**China Shop:** China and cut glass items of the past, including heirlooms carried west in covered wagons.



**CLIMB ABOARD:** RR Locomotive, Street Cars or Ocean Going Cruiser. Also most extensive collection of early outboard motors, fishing items, etc.



**Hobby House:** Collections of all sorts of things of the past. Hat pins, trivets, fancy fans, model cars, toy trains, etc.

**FIVE  
MILLION  
SATISFIED  
VISITORS**

# HAROLD WARP PIONEER VILLAGE

**MINDEN, NEBR.** 

*Stay With Us  
And Your 2nd  
Day Admission  
Is Free.*

**For More Information,  
Call Toll Free 1-800-445-4447 Or 308-832-1181**  
[www.pioneervillage.org](http://www.pioneervillage.org)

**12 MILES SOUTH OF I-80 AT EXIT 279.**

Take Harold Warp Memorial Drive (Nebr. Hwy 10) to Minden. Entrance on US 6, US 34 & NE10.



**TOY SHOP:** Cast Iron toys from grandfather's time, Tin toys from Dad's Day, Dolls Galore, including all of the President's Wives in Inaugural Gowns.



**ART SECTION:** Includes 78 Rogers Groups of Statuary, 23 original Jackson Paintings, 21 Tilbourns, 25 Currier & Ives, 7 Audubons, 10 Catlins. Also fancy Needlework and Crocheting.



**Snowmobile Evolution:** From earliest to modern. Horse Powered Threshers, Treadmills, Cut-away Engines, etc., set in motion by the push of a button.



**STAY OVERNIGHT, COME BACK NEXT DAY ON SAME ADMISSION FEE:** (Top) Pioneer Motel and Restaurant. (Bottom) Pioneer Campground.

Stay at the modern 90 room Pioneer Motel, room rate includes One Pass to Pioneer Village. Enjoy fine food at Good Old Fashioned Prices at the Pioneer Village Restaurant. The Pioneer Village Campground has 135 spaces, most are shaded.